



**QE20-FP2005
QE20 RS485 Network Module Kit**

The **QE20-FP2005 RS485 Network Module** is required in a networked QE20, however a second network module needs to be fitted for "joined" audio segments.

For a fibre optic network, one of the following network kits will also be required:

QE-FP2024 – QE20 Fibre Network Kit – Single Mode

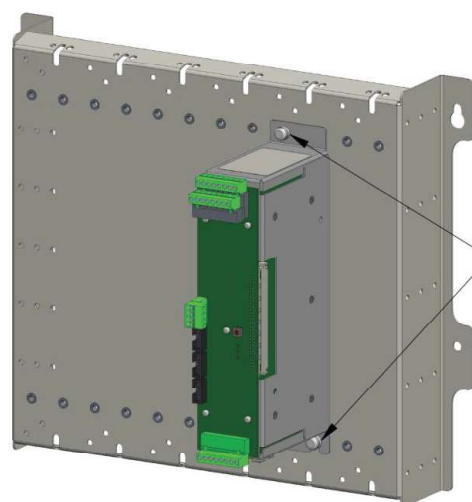
QE-FP2025 – QE20 Fibre Network Kit – Multi Mode

The RS485 Network Module provides:

- 2 x separately isolated RS485 ports with 4wire (separate TX/RX) / 2wire connections with optional earth fault supervision (in conjunction with QE20 Controller Module)
- 2 x network audio connections for speech (PA) and WIP with optional EOL supervision
- 2 x non isolated GP inputs with 4state supervision for general purpose functions
- 2 x non isolated open-collector GP outputs with optional load supervision and programmable functions
- 1 x RJ45 ethernet connector for connection to the QE20 Controller Module
- 1 x TTL serial port for connection to the PIB in the optional Fibre Network Module
- PA & WIP audio connections to the VIF module in the optional Fibre Network Module
- 1 x QEComms port for connection to the VIF module in the optional Fibre Network Module
- WIP audio chain left & right connections to WIP/Input Modules & Controller Module

Each kit contains:

- 1 x RS485 Network Module
- 1 x RJ45 ethernet lead, 200mm long
- 1 x RJ45 ethernet lead, 300mm long
- 2 x RJ45 ethernet lead, 1200mm long
- 2 x M6 x 10mm mounting screws
- 1 x Installation guide



Mount RS485 Networking Module with two M6 x 10 Screws provided with module.